

Designing Your Green House

Let this open, airy townhouse inspire your own environmentally smart renovation

NATURAL ACCENTS

Window treatments from Hunter Douglas keep your energy costs lower in the warmer months by filtering the sunlight. Furniture and fabrics from Design use only sustainable materials, and the rug, from Liza Philippe Design, bears the Rugmark label, which certifies that it was produced without child labor.

PHOTOGRAPHY BY KEITH SCOTT MORTON. STYLING BY LISA PHILIPPE. FURNITURE BY DESIGN. RUG BY LIZA PHILIPPE. WINDOW TREATMENTS BY HUNTER DOUGLAS. PAINT BY BEHR. ART BY [unreadable].

Photographs by Keith Scott Morton

Your Green House

Simple lines and reflective surfaces keep the rooms feeling light and bright



HEALTHY COOKING
Pear-wood cabinets fabricated by Neil Kelly Cabinets are formaldehyde free. Oceanside Glasstiles are crafted from

recycled glass, and counters are IceStone, made from recycled glass in a concrete matrix. The appliances, from Bosch, are Energy Star certified.



THE DAY PAUL GLEICHER AND LISA SHARKEY closed on their new house, an 1885 New York City brownstone that was in "horrendous shape," according to Paul, was doubly important: It was also their anniversary. And, perhaps in part because of the portentous date, the couple decided to do more than just renovate the townhouse; they decided to transform it from a multi-apartment tenement into a family-friendly haven using only green building products and materials. Paul, an architect with his New York City-based firm, Gleicher Design Group, had been interested in environmentally friendly design

▲ DINING IN The dining area, separated from the kitchen by a large island, overlooks the garden behind the house. Chairs are upholstered in fabric from Angela Adams's first line of eco-friendly fabrics.



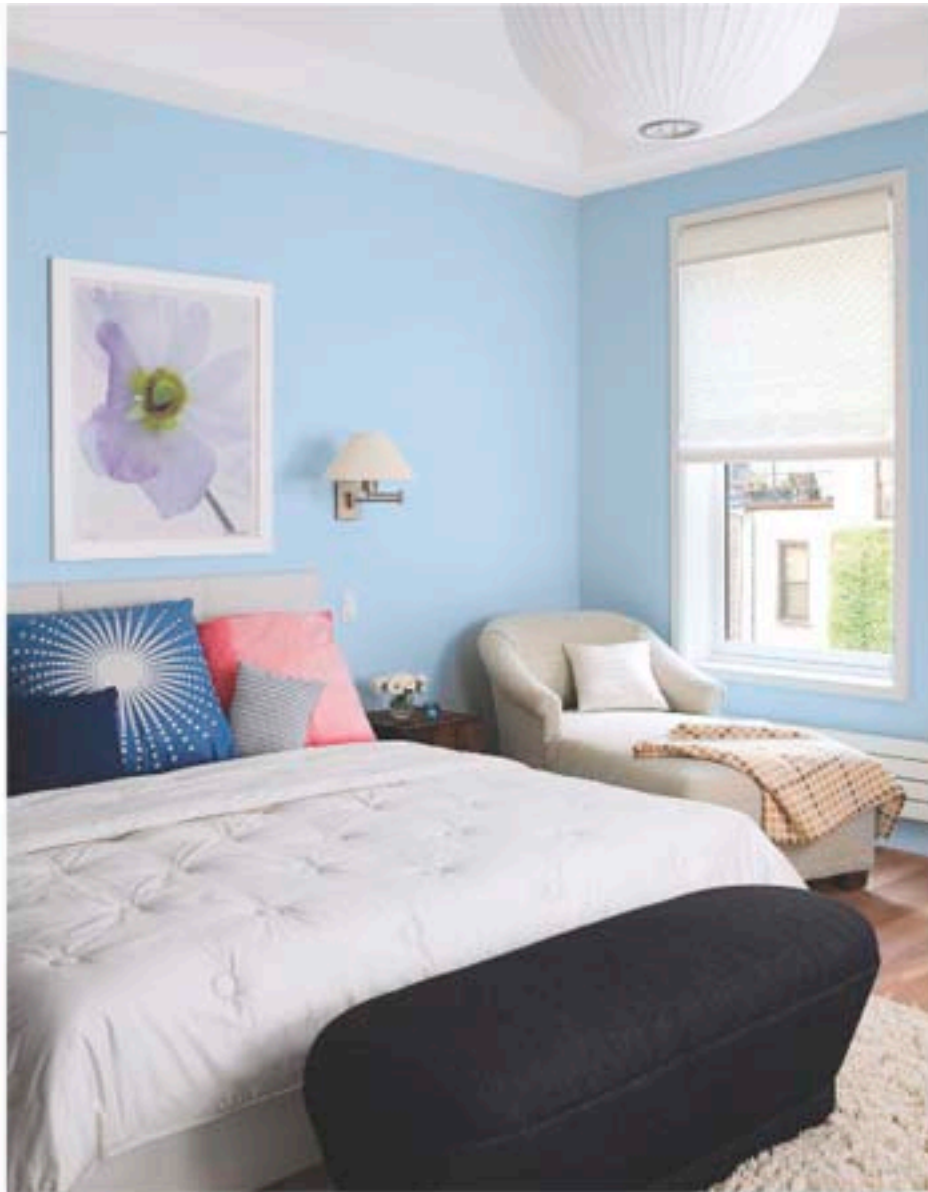
Your Green House



for some time. But it was a chance meeting with Jim and Nancy Chuda, who had built a green house to benefit their foundation, the Children's Health Environmental Coalition, that inspired them. The choice would also set an example for their three children, Greg, 15, Doug, 13, and Casey, seven. "It's the whole idea of 'teach your children well,'" says Lisa. Decision made, Paul and Lisa—along with contractor George Constant and Gleicher Design in-house interior designer David Barry—spent hours researching. They checked Web sites like the U.S. Green Building Council's (usgbc.org), attended trade shows, and even visited factories to find products that met their earth-friendly

▲ **HIGH LIFE** A conservatory from Four Seasons Sunrooms tops the house. Outside the sunroom is a "green roof," planted over roofing components from GAF and Xero Flora America.

◀ **WARM THOUGHTS** Stunning Lyptus flooring from Weyerhaeuser and furnishings from Todd Oldham's line for La-Z-Boy are made using sustainable wood species.



▲ **AIRY AERIE** The master suite is painted in a no-VOC paint from Sherwin-Williams. Custom furnishings were designed by Gleicher Design Group and fabricated by Furniture from formaldehyde-free materials.

credentials. Their quest paid off. Paul and Lisa found more green products than they'd ever dreamed existed. In the process, they discovered that green can mean many things: that the product was produced using sustainable or recycled materials, that it was produced locally (reducing air pollution from gas-powered

transportation), or that it saves energy or water. "Right now, building green does cost more up front," says Paul. "But there are government programs that offer tax credits, and some of the products offer a long-term savings in energy use or maintenance, so it all evens out in the end." Of course, the peace of mind that

Your Green House



“Something as simple as a low-flow toilet can save a lot of water,” says Lisa.

comes from living in a healthy, green house counts for something as well, says Lisa: “It’s been so much fun to be able to tell people that all the things we’re using are good not just for us personally but also for the environment.”

▲ **BATHING BEAUTY** In the master bath, a combination towel rack and radiator from Myson warms the room. A sanitary air bath from Bain Ultra provides a tranquil treat.

GOOD RESOURCES FOR GREEN HOUSES

Many of the most important materials in this house are “invisible.” For example, the insulation, from CertainTeed, is made from recycled fiberglass. The gas-fired boiler, from Weil-McLain, is 98 percent fuel efficient. The ventilation system, from Broan, removes air pollution from the kitchen and bathrooms.

The water filtration system, from EcoWater, keeps buildup from impeding the performance of pipes and appliances. A central vacuum system from Beam Industries removes dust. And a security system from ADT protects against fire and carbon monoxide poisoning, as well as intruders.

PHOTOGRAPHY AND STYLING: TERRY O'CONNOR. DESIGNER: LISA BROWN. PHOTOGRAPHER: TERRY O'CONNOR. STYLIST: TERRY O'CONNOR. PROJECT: BROWN, 2011. WWW.BROWN.COM

You can do it

Build your own green house. These great picks make it easy.

1. LOOKING FORWARD

Earthwise vinyl windows are manufactured to stringent Energy Star and National Fenestration Ratings Council (NFRC) efficiency requirements. Earthwise.

2. SUSTAINABLE STORAGE

Fast-growing, responsibly harvested bamboo gives this credenza from Todd Oldham's collection its great looks and green credentials. La-Z-Boy.

3. WATER-WISE

The Nexxt washer, which bears the Energy Star label, uses sensor technology to determine load size and optimum water and temperature levels, for water- and energy-saving performance. Bosch.

4. WARMING TREND

The Ultra Gas Boiler operates at up to 98 percent efficiency—almost all the energy used by the unit is converted

directly into heat for your home. Weil-McClain.

5. FLOOR STORY Unlike sheet vinyl, Marmoleum linoleum is made from all-natural ingredients like cork, resin, and linseed oil and comes in a wide array of colors. Forbo.



You can do it

1. LIGHT EFFECT

Adjustable Luminette privacy sheers let you block heat gain from sunlight. Hunter Douglas.

2. CLIMATE CONTROL The Infinity Hybrid Heat system replaces a traditional furnace-and-air conditioner combination with an energy-smart heat pump. Carrier.

3. FAB FABRIC Recycled polyester makes these Archiles fabrics a sustainable choice. Angela Adams.

4. GLASS WITH CLASS

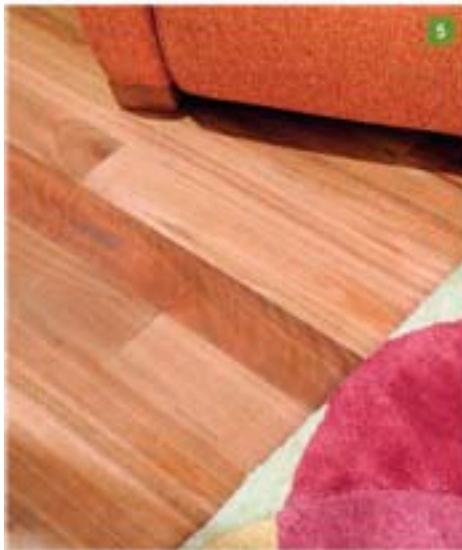
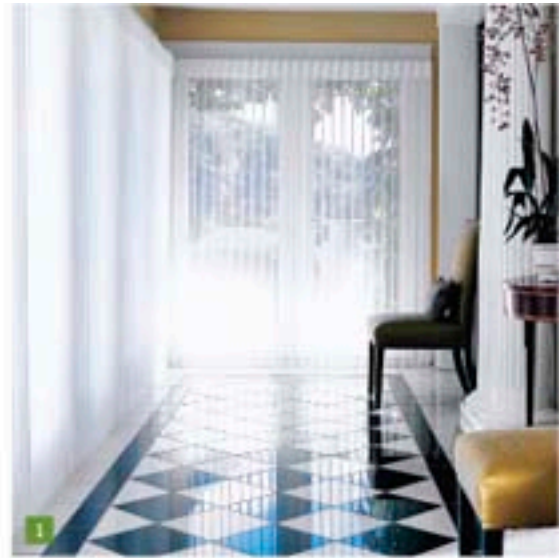
Facets Super Lattice tiles are made from recycled

glass bottles—but the effect is sheer elegance. Oceanside Glasstile.

5. WOOD BE NICE Lyptus flooring is harvested from forests managed to preserve natural habitat ecosystems. Weyerhaeuser.

6. CLEAN SWEEP For a healthier indoor environment, consider the Yellow Jacket central vacuum system. Eureka.

For more information, see Shopping Guide.



Green Design Resource Guide

More information on products and services to help make your house more like the "Green House" featured in this issue.

Building Materials

1. FOUR SEASONS SOLAR PRODUCTS Ultra Living Collection Vinyl Georgian Conservatory. The rooftop sunroom's skylight is Energy Star rated and uses ConservaGlass glazing, which reduces the relative heat gain, glare and UV damage that typical glass does not. It has twice the insulating power of standard insulated glass. www.fourseasonsunrooms.com

2. WEYERHAEUSER'S Lumber products use fast-growing, small-diameter trees efficiently. Studs are made from fast-growing aspen and poplar trees that are debarked and shredded into strands, which are coated with a formaldehyde-free binder. The Lyptus flooring, treads and risers don't damage old growth forests or tropical rain forests. www.weyerhaeuser.com

- EverGuard Roofing Products by **GA&F**: www.gaf.com
- Green Roofing, by **Xero Flor America**: www.xeroflora.com
- Eco-friendly wood by **Columbia Forest Products**: www.columbiaforestproducts.com
- Natural Earth Wall Covering by **American Clay**: www.americanclay.com installed by **Croydon**: www.croydonfinishing.com
- Energy Star, AAMA and NFRC rated windows by **Earthwise Windows**: www.earthwisewindows.com

Heating & Cooling

- Ultra Condensing High Efficiency Gas Boiler and Hot Water Heater by **Weil McLain**: www.weil-mclain.com
- Heating Ventilation Air Conditioner by **Carrier**: www.carrier.com
- Radiant Heating System by **Easy Heat**: www.easyheat.com
- **Bellfires Fireplace** by Sleepy Hollow Chimney Supply www.bellfiresusa.com, installed by **East End Chimney**: www.eastendchimney.com

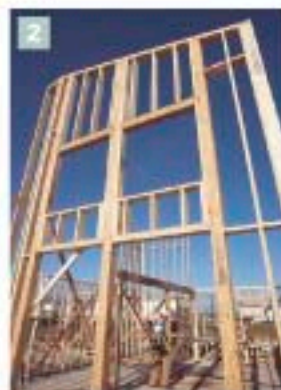
Home Environment

3. SHERWIN WILLIAMS Harmony Interior Latex Coating and Duration Home Interior Latex Coating paints. These paints minimize negative impacts on air quality and deliver maximum performance. They are low-odor, zero- or low-VOC (volatile organic compounds) paints. www.sherwin-williams.com

- Home Drinking Water System by **EcoWater**: www.ecowater.com
- Energy Efficient Window Treatments by **Hunter Douglas**: www.hunterdouglas.com
- **California Closets** using eco-friendly **Roseburg Forest Products** SkyBlend melamine: www.calclosets.com

4. BOSCH By producing high efficiency appliances including refrigerators, dishwashers, double convection ovens, warming drawers, gas cooktops, kitchen exhaust hoods, microwaves, clothes washers and gas clothes dryers, Bosch enables consumers to use less energy and enjoy lower costs of operation. All products are Energy Star compliant. www.boschappliances.com

- Furniture by **Todd Oldham by La-Z-Boy Collection**: www.lazboy.com/oldham
- Cabinets by **Neil Kelly**: www.neilkellycabinets.com
- Countertops by **IceStone**: www.icestone.biz
- Tiles by **Atlas Concorde**: www.atlasconcorde.com
- Tiles by **Ragno**: www.ragno.it/web/collection_en.do
- Tiles by **Imagine Tile**: www.imagineitile.com
- Tiles by **Oceanside Glasstile**: www.glasstile.com
- Carpets by **Interface Flor Carpets**: www.interfaceflor.com
- Central Vacuum System by **Eureka**: www.eureka.com



Green Design Resource Guide

More information on products and services to help make your house more like the "Green House" featured in this month's issue.



Home Furnishings

◀ **MARMOLEUM** by Forbo Flooring is the multi-purpose natural floor that is built to last. Made with natural ingredients, Marmoleum is free of any harmful toxic chemicals. The sheet goods are installed with solvent free adhesives and Marmoleum Click is installed without any adhesive. Marmoleum has no adverse health issues, either during production, its useful life, or disposal. It is truly sustainable:
www.themarmoleumstore.com

- Furniture by **Environment Furniture**:
www.environment-furniture.com
- Furniture by **Desiron Furniture**:
www.desiron.com

- Furniture by **Furniture**:
www.furniture.com
- Mattress by **Coverest**:
www.coverest.com
- Bathroom Accessories by **Lefroy Brooks**: www.lefroybrooks.com

ENVIRONMENTAL DEFENSE Living Cities program creates practical solutions to the environmental challenges facing urban areas. Visit www.environmentaldefense.org for more information on green living and design.



ENVIRONMENTAL DEFENSE
finding the ways that work

Brooklyn: brooklynhill.com.
3, **Portsmouth panel bed**, \$799, from Country Living collection for Lane; lanefurniture.com.
4, **Uma bedding**, \$64 for a European sham, from Pine Cone Hill; pineconehill.com.
5, **Chris Madden Normandy dresser** (790-2610), \$679, from JCPenney Home; jcpenney.com.

YOUR GREEN HOUSE

Contractors: Architect: Paul Gleicher, Gleicher Design Group, 135 Fifth Ave., New York, NY 10010; 212-462-2789; gleicherdesign.com.

Interior Designer: David Barry, Gleicher Design Group, 135 Fifth Avenue, New York, NY 10010; 212-462-2789; gleicherdesign.com.

General contractor: George Constant, Abigail Home Interiors, 508 E. 79th St., New York, NY 10021; 212-772-6230.

Mechanical engineer: Jack Green Associates, 140 W. 57th St., New York, NY 10018; 212-629-0856.

Structural engineer: Cowley Engineering PC., 444F Old Post Rd., Bedford, NY 10564; 914-234-7054.

Plumber: Master Plumbing & Heating, 25-18 50th St., Woodside, NY 11377; 718-545-7846.

Electrician: J.C. Electrical, 14-45 Broadway, Long Island City, NY 11106; 718-932-2499.

Facade mason: Wolf Restorations, 101 Lake Dr., Hewlett, NY 11557; 516-574-1294.

Wood flooring installation: Elite Floor Service, 12 Saratoga Ave., Yonkers, NY 10705; 212-228-1050.

Porcelain and glass tile installations: Caraballe, 718-668-0469.

Painting contractor: Taylormade Contractors, 1490 Houndell Loop, Brooklyn, NY 11239; 947-262-7428.

Chimney installation: East End Chimney, P.O. Box 573, Moriches, NY 11955; 631-878-0999.

Door and window installations: EZ-Tilt Window, 562 W. 52nd St., New York, NY 10019; 212-977-5090.

Roofing installation: Roof Services, 45 Third Ave., Bay Shore, NY 11706; 631-666-3232.

Green roof installation: Xero Flora America, P.O. Box 24666, Lansing, MI 48909.

Metal railings: Morigik Metal Design, 145 Hudson St., New York, NY 10013; 212-463-9304.

Window treatments installation: Steven Kelig, 62-32 80th Rd., Glendale, NY 11385; 718-417-7999.

Shower enclosure installation: Action Glass Co., 718-756-8090.

Stone fabricator: Irsian Marble, 24-70 49th St., Long Island City, NY 11103; 718-274-1997.

Close interior: California Closet Co.; 212-517-7877.

Plastering: Croyden Finishing, 82 Wharson Dr., Corchade Manor, NY 10567; 917-687-4812.

Central vacuum installation: Utesla Security & Central Vacuum; 877-324-7174.

Air conditioning installation: Palow Bros., 100-24 Avenue D, Brooklyn, NY 11236; 718-241-1100.

Trucking: Wharton Van Lines; 800-248-4810.

Exterior: Doors, windows, Clad French Casement, from Marvin Windows; marvin.com. Window installation by EZ-Tilt Window; 212-977-5090.

Front door intercom system: iDot Audio/Video Intercom, from Seattle Security Systems of America; seattleusa.com.

Floral design: by Stephen Goldman of Urban Flora; 212-260-0564.

Stucco facade: from Wolf Restorations; 516-574-1294. **Wall sconce:** One-Light Lighthouse Sconce, by Murray Fein; fmcc.com.

Living room: Sofa, Thompson Sectional upholstered in Leaf, side table, Simon side table in Espresso Walnut.

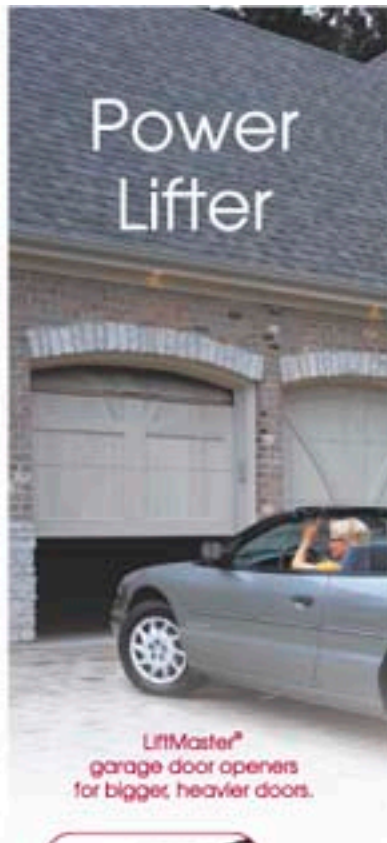
Foot lamp: Mercer lamp in Matte Sued with White Linen Shade, from Deaton; deaton.com. **Rug:** String Game, from Lisa Phillips Design; lraphillipsdesign.com.

Wall art: *The Small Town*, by Stephen Goldman; 212-260-0564. **Ceiling fixture:** Large Fanned Pendant with Gold Ivy Silk Shade, from Galbraith & Paul; galbraithandpaul.com.

Sofa pillows: Triad Stripe Squish lounge chairs upholstered, Longitude and Sweet Grass, from Pollock; pollockassociates.com.

Coffee table: Campfire bench X in Ebony; dresser, Lotus three-drawer dresser in Ebony, from Environment.

Power Lifter



LiftMaster®
garage door openers
for bigger, heavier doors.



Do you have an extremely heavy garage door? Our LiftMaster® 2595 door opener is designed to lift heavy doors with ease. This 3/4 horsepower model offers 50% more power than 1/2 horsepower models. So even the heaviest of garage doors open effortlessly.

Incredibly, this powerful model happens to be quiet, too.

For your nearest LiftMaster® dealer and more on our garage door openers, gate operators and accessories visit www.liftmaster.com/gh.

CHAMBERLAIN®
LiftMaster.
MAKING ACCESS EASIER

Grand Opener



LiftMaster® offers a complete line of gate operators, too.



Smooth running reliability and gate automation controlled from the comfort of your car. Each model is engineered to resist inclement weather, temperature extremes, and power surges. Some models even offer battery backup systems, in the event of a power failure.

Home access has never been more convenient.

For your nearest LiftMaster® dealer and more on our garage door openers, gate operators and accessories visit www.liftmaster.com/gh

LiftMaster
MAKING ACCESS EASIER

Shopping Guide

Furniture: environmentfurniture.com. Side chair, Seelil arm chair, from Doughia.com. Side chairs fabric, Era Citrus, from AngelaAdams.com. Fireplace surround, Sage Pearl, from IceStone.com. Fireplace, Bellini BSV Fireplace with SuperFlex bar lines, from ShopyHollowChimneySupply.com. Fireplace installation by East End Chimney; 631-878-9999. Fireplace wall manufactured by Columbia Forest Products; columbiaforestproducts.com. Fireplace Wall fabricated by Neil Kelly Cabinets; neilkellycabinets.com. Paint, Harmony Interior Latex in Queen Anne's Lace, from SherwinWilliams.com. Radiator, Dicot Panel, from MyronRadiators.com. Wood flooring, Lyttus Standard Grade, from Weyerhaeuser.com. Window treatments, Laminette Privacy Screens, Summer Breeze fabric in Vanilla (K12-702), from HunterDouglas.com; 800-274-2985.

Dining area: Painting, Pall Mountain, by StephenGoldman.com; 212-260-0564. Table, Madison Table; bench, Madison Bench, from Devtron.com. Chairs from Doughia.com. Chair upholstery fabric, from AngelaAdams.com. Ceiling fixture, Titanic c100 in Brushed Nickel, from Ylighting.com. Window treatments, Alaura Woven Textures Roman shades in Silkweave (RLWT-115), from HunterDouglas.com; 800-274-2985. Flooring, Lyttus Standard Grade, from Weyerhaeuser.com. Radiator, Dicot Panel, from MyronRadiators.com.

Kitchen: Paint, Harmony Interior Latex in Lemon Chiffon, from SherwinWilliams.com. Backsplash, Tessera field tile in Alpine Spring, from OceansideGlass.com. Cabinets material, Paeboard, from ColumbiaForestProducts.com. Cabinet fabrication by Neil Kelly Cabinets; neilkellycabinets.com. Countertops, Sage Pearl, from IceStone.com. Refrigerator, V-Cool side-by-side; dishwasher, Evolution 800 series; double convection wall ovens, 700 series; warming drawer, HWD305UC; gas cooktop, PGL series; ventilation hood, model DK1936UC; microwave, model HMB405; concept

kitchen machine, model MUM7409UC; washer/dryer, Next Premium, from Bosch.com. Island stools, Barrow Bar Stool, from Devtron.com. Island stools upholstery fabric, Era Citrus, from AngelaAdams.com. Sink, Blanco Precision 542-707, from Blanco.com. Sinks, supplied by Simon'sHardware.com and BachSimonHardware.com. Faucet, Golf GF 1092-GN, from LefroyBrooks.com. Water filtration, ERR3000 and ER0375, from EcoWaterSystems.com. Breakfast table, Santos round dining table, from EnvironmentFurniture.com. Banquette, custom, by MartinAlbertInteriors.com. Banquette upholstery fabric, Mass, from PollackPollackAssociates.com.

Master bedroom: Bed, king size, with bisque tufted headboard; mattress; removable mattress pad; chair; bench; bed pillows, organic cotton, wool, and rubber, all custom-designed by GleicherDesignGroup.com and manufactured by Furniture.com. Organic Wood Comforter, from Furniture.com. Bed upholstery fabric, Natural Denim; bench upholstery fabric, Indigo Denim, from LoomstateDenim.com. Ceiling fixture, Nelson Ball Lamp, from Ylighting.com. Wall scones, Boring Swing-Arm Wall Lamp, from GeorgeKovacs.com; Ylighting.com. Window treatments, Alaura Woven Textures Roman shades in Silkweave (RLWT-115), from HunterDouglas.com; 800-274-2985. Paint, Harmony Interior Latex in Sky High, from SherwinWilliams.com. Rug, Shag in Off White, from ToddOldham.com. Radiator, Dicot Panel, from MyronRadiators.com. End tables, Recife End Table in Peroba, from EnvironmentFurniture.com. environmentfurniture.com. Flooring, Lyttus Standard Grade, from Weyerhaeuser.com; lyttus.com.

Master bathroom: Flooring; countertops; tub deck, Dorim Sky, from IceStone.com. Lavatory, XO Rectangular Ceramic Basin; Lavatory faucet, XO Jo Mono; Tub filler and hand shower, XO, from LefroyBrooks.com. Air bath, Origami

Therma Bath Tub 7256 from Bain Ultra; ultrabaths.com. **Toilet**, Aqua Dual Flush, from Toto; totousa.com. **Shower enclosure**, custom, from Action Glass Co.; actionglass.com. **Medicine cabinets**, model MP24DFN, from Robert; robert.com. **Wall sconces**, One-Light Bath Scones; ceiling fixture, Rex Pendant Light, from Ylighting; y-lighting.com. **Window treatment**, Aurora Woven Textures Roman shades in Silkweave (RLWT-113), from Hunter Douglas; 800-274-2985; hunterdouglas.com. **Towel warmer**, Caravine from the Melody Collection by Myson Radiators; mysoninc.com. **Dressing table stool**, custom-designed by Glickler Design Group and manufactured by Furniture; furniture.com. **Dressing table stool upholstery fabric**, Wyatt in Sky, from Angela Adams; angelaadams.com. **Wall tiles**, porcelain, View in Ivory, from Atlas Concorde; atlasconcorde.com. **Vanity**, cherry wood on Parbond, Columbia Forest Products; columbiaforestproducts.com. **Vanity fabrication** by Neil Kelly Cabinets; neilkellycabinets.com.

Sunroom: Conservatory structure, UltraLiving Georgian Sunroom with ConservaGlass, from Four Seasons Solar Products Corp.; fourseasonsunrooms.com. **Sofa**, Snap sofa; chair, Snap Armless Stationary chair; ottoman, Arc; tables, Bamboo Group Leaf Cube Tables; *casual*, Bamboo Group-Credenza; *mirror*, Walnut Inlay Floor Mirror; **floor lamp**; Chrome Standing Lamp with Walnut Shade; rug, Overlapping Dots in Red Palette; **table lamp**, AL1000; **pillows**, Pink Ribbon Pillows, from Todd Oldham by La-Z-Boy; lazboy.com. **Window treatments**, Laminette privacy sheers in Summer Breeze fabric in Vanilla (K12-702), from Hunter Douglas; 800-274-2985; hunterdouglas.com. **Flooring**, Lyptus Standard Grade, from Weyerhaeuser; lyptus.com. **Paint**, Harmony Interior Latex in Lemon Chiffon, from Sherwin-Williams; sherwinwilliams.com. **Radiator**, Column Disc, from Myson Radiators; mysoninc.com. **Central vacuum system**, from Bean Industries; beanvac.com. **Art**, by Joan Lober and Ben Packer.

Roof: Roof Membrane, 80 mil TPO, from GAF; gaf.com. **Green roof**, Extensive Roof System Sedum Mix, from Xero Flor America; xeroflora.com. **Paving stones**, Emerald Ice, from

IceStone; icestone.biz. **Chimney**, custom, by East End Chimney; eastendchimney.com. **Water feature**, custom, by Tudor Farmer; 310-621-8977. **Flowers** from HomeGoods; homegoods.com. **Landscaping** by Stephen Goldman of Urban Flora; 212-260-0564. **Chair** from Smith & Hawken; smithandhawken.com.

Resources: Children's Health Environmental Coalition; checnet.org.

YOU CAN DO IT: YOUR GREEN HOUSE

First page: 1. Eyebrow window with extended legs over picture window, \$5,500 installed, from Earthwise Windows; 866-993-9473; earthwisewindows.com. 2. Bamboo Credenza (AT040266-00), \$2,299, from Todd Oldham for La-Z-Boy; lazboy.com. 3. Nexx washer, \$799 to \$1,395, from Bosch; bosch.com. 4. Ultra Gas Boiler, price varies by size and installation, from Weil-McLain; weil-mclain.com. 5. Marmosium linoleum, \$4.50 to \$9 per square foot, from Forbo; forbo.com.

Second page: 1. Laminette Privacy Sheers in Summer Breeze fabric, \$1,409 for a 72" by 84" window exposure, from Hunter Douglas; 800-274-2985; hunterdouglas.com. 2. Infinity Hybrid Heat System, price varies by size and installation, from Carrier; residential.carrier.com. 3. Architec fabric, \$30 to \$34 per yard, from Angela Adams; angelaadams.com. 4. Facets Super Lattice tiles, \$40 to \$50 per square foot, from OceanSide Glass Tile; glassite.com. 5. Lyptus flooring, contact your local dealer for pricing information, from Weyerhaeuser; lyptus.com. 6. Yellow Jacket central vacuum, \$150, from Eureka; 800-688-4585; eurekacentralvac.com.

WE'LL DRINK TO THAT

Wine captain (1175WCL), \$1,411, from U-Line; u-line.com. Bondout Instant Read Wine Thermometer, \$30, from Potomac; potomac.com. Inspire Wine Opener (4207), \$29.99, from Oster; at Target, Costco; oster.com. Andrea's Complete Wine Course for Everyone, \$19.95, from Andrea Wine; andriawine.com. The Personal Wine Curator, \$29.95, from the Wine Curators; thewinecurators.com.

All prices are approximate.

On Call



Professional LiftMaster® dealers bring the very best in integrated access systems.



Complete perimeter control, including garage door openers, gate operators, accessories and more. Installed by the world's largest and most trusted network of professionals. Everything is done for you.

Absolutely guaranteed.

For your nearest LiftMaster® dealer and more on our garage door openers, gate operators and accessories visit www.liftmaster.com/gh

CHAMBERLAIN®
LiftMaster
MAKING ACCESS EASIER